



Government of India
Ministry of Earth Sciences
India Meteorological Department



Press Release
Date: 09th July, 2025
Time of Issue: 1315 hours IST

Subject: Active monsoon conditions likely to continue over central parts of the country during next 4-5 days with possibility of isolated extremely heavy rainfall (≥ 21 cm) over southeast Madhya Pradesh, Vidarbha, south Chhattisgarh today, the 09th July.

Realised weather during past 24 hours till 0830 hours IST of today, the 09th July, 2025:

- ❖ **Heavy to very heavy rainfall with isolated extremely heavy rainfall (≥ 21 cm)** has been recorded over East Madhya Pradesh, Vidarbha and Tripura.
- ❖ **Heavy to very heavy rainfall (7-20 cm)** has been recorded at isolated places over West Bengal, West Madhya Pradesh, Chhattisgarh, Odisha, East Uttar Pradesh, Haryana; **Heavy rainfall (7-11 cm)** at isolated places over Jharkhand, Himachal Pradesh, Uttarakhand, West Rajasthan, West Uttar Pradesh, Coastal Karnataka, Mizoram and Meghalaya.
- ❖ **Thunderstorm accompanied with Squally/Gusty winds with speed 40-60 kmph** over Tamil Nadu, Interior Karnataka, Coastal Andhra Pradesh & Yanam, Telangana, Rayalaseema, Assam, Tripura, Arunachal Pradesh, Gujarat, West Madhya Pradesh, Jammu, Andaman & Nicobar Islands, Madhya Maharashtra, Marathwada, West Uttar Pradesh.

For more details of realised weather, kindly refer [Annexure I](#),

i. Weather Systems, Forecast and Warnings (refer to Annexure II & III):

- ❖ The western end of the **Monsoon trough** runs north of its normal position and its eastern ends runs near its normal position at mean sea level.
- ❖ The Low-Pressure area over Gangetic West Bengal & neighbourhood lay over Gangetic West Bengal adjoining Jharkhand at 0830 hrs IST of today, the 09th July 2025. The associated cyclonic circulation extended upto middle tropospheric level. It is likely to move slowly west-northwestwards across Jharkhand and north Chhattisgarh during next 2 days.
- ❖ An upper air cyclonic circulation over north Haryana and another over northwest Uttar Pradesh & neighbourhood in lower tropospheric levels.
- ❖ A trough runs from northeast Arabian Sea to the cyclonic circulation associated with Low-Pressure area over Gangetic West Bengal & neighbourhood across south Gujarat Region, north Madhya Maharashtra, Vidarbha, south Chhattisgarh, Odisha in middle tropospheric levels.
- ❖ A trough runs from west Assam to Telangana in lower tropospheric levels.

Under the influence of these systems, the following weather is likely:

East & Central India:

- ✓ **Extremely heavy rainfall (≥ 21 cm)** very likely at isolated places over southeast Madhya Pradesh, Vidarbha, south Chhattisgarh on 09th July.
- ✓ Isolated **heavy rainfall** very likely to continue over Madhya Pradesh during 09th-15th; Vidarbha during 09th-11th; Chhattisgarh during 09th-11th; 14th & 15th; Sub-Himalayan West Bengal & Sikkim on 09th & 13th; Gangetic West Bengal on 09th & 14th; Jharkhand on 09th & 10th; Odisha on 09th and during 13th-15th July with **very heavy rainfall** over Madhya Pradesh during 09th-12th; West Bengal, Jharkhand on 09th and Vidarbha & Chhattisgarh on 10th July.
- ✓ Light/moderate rainfall at most/many places accompanied with thunderstorm, lightning & gusty winds speed reaching 30-40 kmph likely over the region during next 7 days.

Northwest India:

- ✓ Isolated **heavy rainfall** likely over East Rajasthan, Uttarakhand during 09th-15th, Jammu-Kashmir, Punjab, Haryana Chandigarh on 09th & 10th; Himachal Pradesh on 9th, 10th and during 13th-15th; West Uttar Pradesh during 09th-13th; East Uttar Pradesh during 09th-11th; West Rajasthan during 12th-15th July with **very heavy rainfall over** Uttarakhand, Uttar Pradesh, Punjab, Haryana on 09th, East Rajasthan during 11th-13th July.
- ✓ Light/moderate rainfall at most/many places accompanied with thunderstorm, lightning likely over western Himalayan region and some/many places over the plains during next 7 days.

West India:

- ✓ **Heavy rainfall** likely at isolated places over Konkan & Goa, Gujarat Region during 09th-15th; Ghat areas of Madhya Maharashtra on 09th & 10th; Saurashtra & Kutch on 12th & 13th July.
- ✓ Light/moderate rainfall at many/some places very likely over the region during next 7 days.

Northeast India:

- ✓ Light/moderate rainfall at most places accompanied with **thunderstorm, lightning** likely to continue over Northeast India during next 7 days.
- ✓ Isolated heavy rainfall very likely over Assam & Meghalaya, Nagaland, Manipur, Mizoram & Tripura during 09th-15th; Arunachal Pradesh during 11th-15th **with very heavy rainfall** over Tripura on 09th July.

South Peninsular India:

- ✓ Isolated **heavy rainfall** likely over Coastal Karnataka, Kerala during 09th-15th and Telangana on 09th July.
- ✓ **Strong surface winds** (speed reaching 40-50 kmph) very likely over South Peninsular India during next 5 days.
- ✓ Light/moderate rainfall at many/some places over Kerala & Mahe, Lakshadweep, Karnataka, Rayalaseema; isolated to scattered rainfall over Coastal Andhra Pradesh & Yanam, Telangana during next 7 days.

Fishermen Warnings:

Fishermen are advised to avoid venturing into the following from 09th July to 14th July 2025 to the following Areas:

Arabian Sea:

Along and off Gujarat coast and adjoining sea area for day 1 (09th July), Konkan, Goa coasts and adjoining sea area; along and off the Somalia coast and adjoining sea areas, Oman and adjoining Yemen coast & adjoining sea areas during day 1 to day 5 (09th to 14th July); most parts of westcentral and adjoining eastcentral Arabian Sea; southern parts of northwest & northern parts of southwest Arabian Sea for day 1 to day 5 (09th to 14th July).

Bay of Bengal:

Along and off north Andhra Pradesh coast for day 1 to day 3 (09th & 12th July); along and off Odisha, West Bengal and adjoining Bangladesh coasts for day 1 (09th July). Most parts of westcentral Bay of Bengal and adjoining areas of eastcentral and southwest Bay of Bengal for day 1 & day 2 (09th & 10th July), many parts of westcentral Bay of Bengal and adjoining parts of southwest Bay of Bengal for day 3 (11th July), few parts of westcentral Bay of Bengal for day 4 and day 5 (12th & 13th July); some southern parts of south Bay of Bengal for day 3 to day 5 (11th to 14th July). Over Gulf of Mannar for day 1 to day 5 (09th & 14th July).

Total suspension of fishing operations is suggested over above mentioned areas and dates.

ii. Weather conditions and forecast over Delhi/NCR during 09th to 12th July, 2025 (Annexure IV)

For more details, kindly refer National Weather Bulletin:

https://mausam.imd.gov.in/responsive/all_india_forecast_bulletin.php

For District wise warnings refer: <https://mausam.imd.gov.in/responsive/districtWiseWarningGIS.php>

Rainfall recorded (in cm) during past 24 hours till 0830 hours IST of today, the 09th July:

- ❖ **Nagaland, Manipur, Mizoram & Tripura:** Belonia ARG (dist South Tripura) 33; Belonia (dist South Tripura) 29; Kvk South (dist South Tripura) 26; Bagafa (dist South Tripura) 25; Sabroom (dist South Tripura) 20; Amarpur (dist Gomati), Sabroom AWS (dist South Tripura) 17 Each; Gandechehra (dist Dhalai) 15; Gokulpur AWS (dist Gomati) 11; Teliamura ARG (dist Khowai), Kvk Dhalai (dist Dhalai), Jirania ARG (dist West Tripura) 8 Each; Aizawl (dist Aizawl), Sonamura (dist Sipahijala), Kamalpur (dist Dhalai), Lengpui (dist Aizawl), Sonamura ARG (dist Sipahijala) 7 Each;
- ❖ **Vidarbha:** Umrer (dist Nagpur) 28; Kuhi (dist Nagpur) 22; Nagpur Aerodrome (dist Nagpur), Nagpur (aws) (dist Nagpur) 20 Each; Bhiwapur (dist Nagpur) 19; Kamptee (dist Nagpur), Pauni (dist Bhandara), Lakhandur (dist Bhandara), Hingna (dist Nagpur) 16 Each; Nagbhir (dist Chandrapur), Chimur (dist Chandrapur) 15 Each; Mauda (dist Nagpur), Bramhapuri (dist Chandrapur), Lakhani (dist Bhandara), Ramtek (dist Nagpur) 14 Each; Bhandara (dist Bhandara), Desaiganj (dist Gadchiroli), Hinganghat (dist Wardha), Sakoli (dist Bhandara) 13 Each; Kharangha (dist Wardha), Sadakarjuni (dist Gondia) 12 Each; Katol (dist Nagpur), Arvi (dist Wardha), Samudrapur (dist Wardha) 11 Each; Deori (dist Gondia), Selu (dist Wardha), Perseoni (dist Nagpur) 10 Each; Kurkheda (dist Gadchiroli), Arjuni Morgaon (dist Gondia), Kalmeshwar (dist Nagpur), Armori (dist Gadchiroli), Narkheda (dist Nagpur), Sindewahi (dist Chandrapur), Wardha (dist Wardha) 9 Each; Tumsar (dist Bhandara), Dhamangaon Rlwy (dist Amraoti), Maregaon (dist Yeotmal), Korchi (dist Gadchiroli), Gadchiroli (dist Gadchiroli), Deoli (dist Wardha), Ramtek (ARG) (dist Nagpur), Warora (dist Chandrapur), Mohadi (dist Bhandara), Ralegaon (dist Yeotmal) 8 Each; Dhanora (dist Gadchiroli), Tiwsa (dist Amraoti), Ashti (dist Wardha), Gondia AP (dist Gondia) 7 Each;
- ❖ **East Madhya Pradesh:** Katangi (dist Balaghat) 21; Tirodi (dist Balaghat) 15; Paraswada (dist Balaghat) 11; Waraseoni (dist Balaghat) 10; Lalburra (dist Balaghat) 9; Balaghat-aws (dist Balaghat) 8; Sausar (dist Chindwara), Bichhua (dist Chindwara) 7 Each;
- ❖ **Sub Himalayan West Bengal & Sikkim:** Lava (dist Kalimpong) 15; Chalouni Tea Estate (dist Jalpaiguri) 13; Amfu Kalimpong (dist Kalimpong) 9; Zurrantee T.e (dist Jalpaiguri) 8; Pedong (dist Kalimpong), Kalimpong (dist Kalimpong), Jhallong (dist Kalimpong) 7 Each;
- ❖ **West Madhya Pradesh:** Pachmarhi (dist Narmadapuram) 14; Godadongri (dist Betul), Babai (makhan Nagar) (dist Narmadapuram) 10 Each; Shahpur (dist Betul), Seoni Malwa (dist Narmadapuram) 9 Each; Sohagpur (dist Narmadapuram) 8; Isagarh (dist Ashoknagar), Itarsi (dist Narmadapuram), Pipariya (dist Narmadapuram), Rehti (dist Sehore), Deori (dist Raisen) 7 Each;
- ❖ **Odisha:** Chandanpur (dist Mayurbhanj) 14; Bargarh (dist Bargarh) 8; Jamsolaghat (dist Mayurbhanj), Sarasakana (dist Mayurbhanj), Balisankara (dist Sundargarh) 7 Each;
- ❖ **Haryana-Chandigarh-Delhi:** Kanina (dist Mahendragarh) 13;
- ❖ **Chhattisgarh:** Durg (dist Durg) 13; Balod (dist Balod) 12; Ahiwara (dist Durg) 10; Gandai (dist Khairagarh Chh Gandai), Dhamdha (dist Durg), Mandir Hasoud (dist Raipur) 9 Each; Arjunda (dist Balod), Borai (dist Durg) 8 Each; Dondilohara (dist Balod), Patan (dist Durg), Bhakhara (dist Dhamtari), Mukdega (dist Raigarh), Dharshiva (dist Raipur), Bhilai (dist Durg) 7 Each;
- ❖ **East Uttar Pradesh:** Haraiya (dist Basti), Chanderdeepghat (dist Gorakhpur) 12 Each; Bhinga (dist Shrawasti) 11; Tulasipur (dist Balrampur) 10; Mankapur (dist Gonda), Bansi Tehsil (dist Siddharth Nagar), Sultanpur (dist Sultanpur) 9 Each; Kakrahi (dist Siddharth Nagar), Ayoadhya (dist Ayodhya) 8 Each;
- ❖ **Gangetic West Bengal:** Manteswar (dist Purba Bardhaman) 12; Gheropara (dist Birbhum), Sri Niketan (dist Birbhum), Mangalkote (dist Purba Bardhaman) 9 Each; Burdwan PTO (dist Purba Bardhaman) 7;
- ❖ **Uttarakhand:** Sama (dist Bageshwar) 11; Haldwani (dist Nainital), Loharkhet (dist Bageshwar) 9 Each; Uttar Kashi (dist Uttarkashi) 8; Uttar Kashi (CWC) (dist Uttarkashi) 7;
- ❖ **Assam & Meghalaya:** Cherrapunji(rkm) (dist East Khasi Hills) 11; Mawsynram (dist East Khasi Hills), Cherrapunji (dist East Khasi Hills) 9 Each; Udaipur (dist Tinsukia) 7;
- ❖ **Coastal Karnataka:** Kadra (dist Uttara Kannada) 10; Siddapura (dist Udupi) 8;
- ❖ **West Rajasthan:** Hanumangarh (dist Hanumangarh) 10; Sriganaganagar Tehsil SR (dist Sri Ganganagar) 7;
- ❖ **Jharkhand:** Jamshedpur AP (dist East Singbhum), Ghatsila (dist East Singbhum) 8 Each;
- ❖ **Himachal Pradesh:** Nahan (dist Sirmaur) 7;
- ❖ **West Uttar Pradesh:** Orail (dist Jalaun) 7.

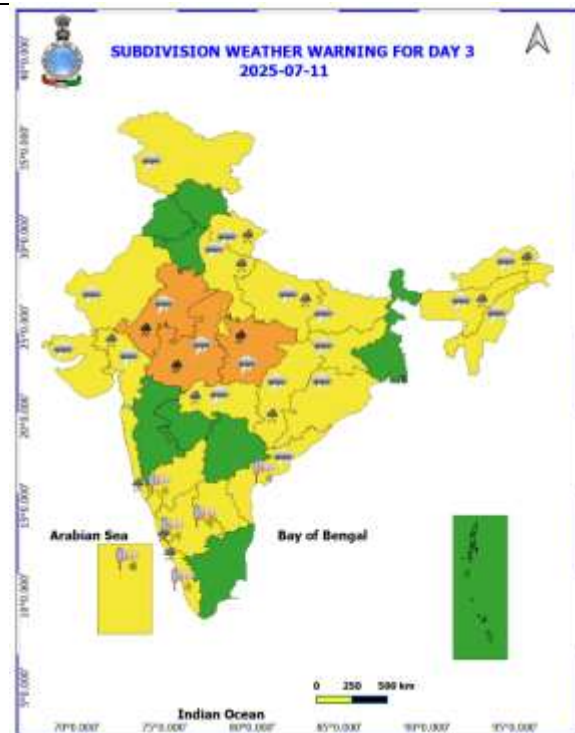
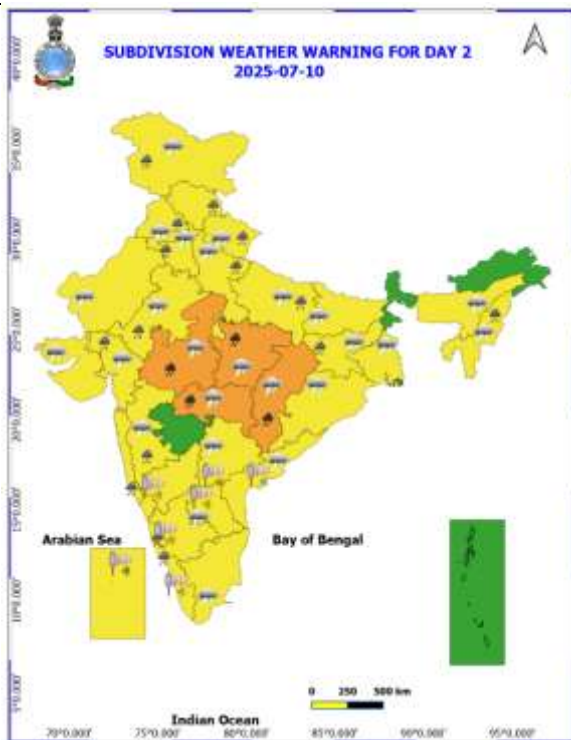
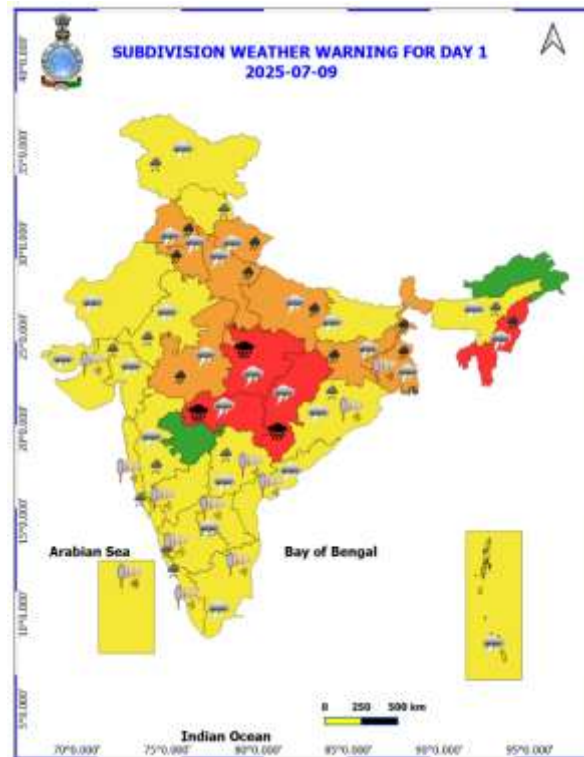
Realised Gusty Winds (kmph) During Past 24hours ending at 0830 hrs IST of today the 09th July:

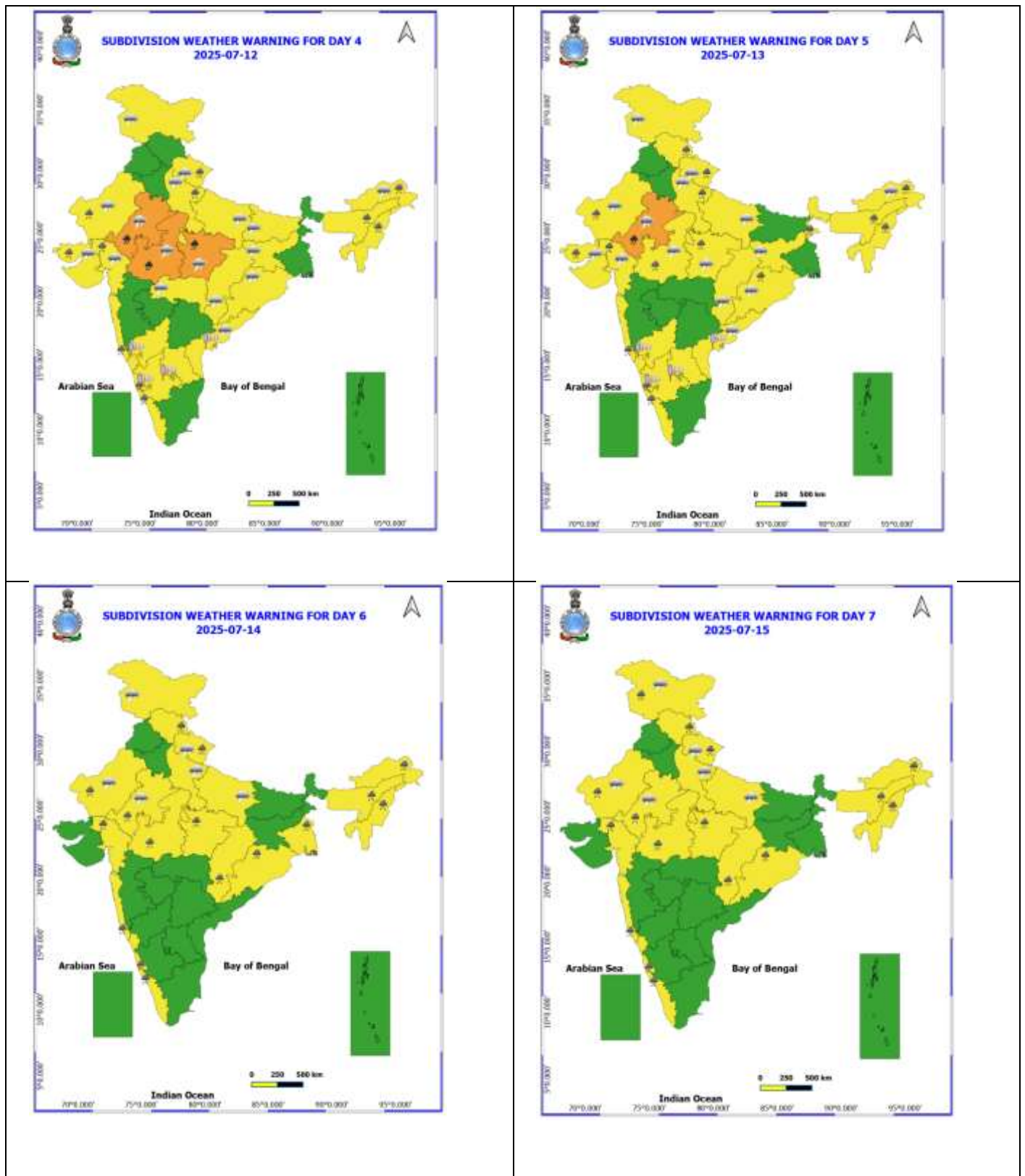
- ❖ **Tamil Nadu, Puducherry & Karaikal:** Tiruttani_PTO 78, Vedsandur 63, Thiruchendur 59, Tenkasi 52, Kovilpatti 52, Tirur 52, Natham 52, Coimbatore 50, Kadavur(Taluk_Office) 48, Aruppukottai 44, Tiruvarur 43, Aduthurai 43, Karaikal 43, Hosur 41;
- ❖ **Arunachal Pradesh:** Anini 56, Lowertato 50, Barpeta 39, Gauripur 37, Nalbari 37;
- ❖ **Saurashtra & Kutch:** Dhari (Amreli) 54;
- ❖ **West Madhya Pradesh:** Ujjain 50, Shajapur 37;
- ❖ **Assam & Meghalaya:** Shillong 50, Mawkyrwat 46, Jowai 41, Barpeta 39, Gauripur 37, Nalbari 37, Chirang 35, Down_Town_University 35, Mushalpur 33, Gossaigaon 33, Boko 33, Gauhati_University 33, Umlapher 31, Umanai 31;
- ❖ **Andaman & Nicobar Islands:** Sri Vijayapuram 48;
- ❖ **Madhya Maharashtra:** Mahabaleshwar (Satara) 48, Kurvande(Pune) 48, Kalwan (Nashik) 46
- ❖ **Jammu-Kashmir:** Kupwara 46, Chatha Jammu 39, Ramban 35;
- ❖ **East Uttar Pradesh:** Fatehpur 46, Balrampur 43, Baharaich 39;
- ❖ **Marathwada:** Dharashiv 44, Ambejogai (Beed) 41;
- ❖ **West Uttar Pradesh:** Bulandshahar 43;
- ❖ **Gujarat Region:** Vyara (Tapi) 41;

ANNEXURE II

Table-1								
7 Days Rainfall Forecast								
S.No.	Subdivision	9- Jul	10- Jul	11- Jul	12- Jul	13- Jul	14- Jul	15- Jul
		Day 1	Day 2	Day 3	Day 4	Day 5	Day 6	Day 7
1	ANDAMAN & NICOBAR ISLANDS	FWS	FWS	FWS	WS	WS	WS	WS
2	ARUNACHAL PRADESH	SCT	SCT	SCT	FWS	FWS	FWS	FWS
3	ASSAM & MEHGHALAYA	FWS	SCT	SCT	FWS	FWS	FWS	FWS
4	NAGALAND, MANIPUR, MIZORAM AND TRIPURA	WS	FWS	SCT	FWS	FWS	FWS	FWS
5	SUB HIMALAYAN WEST BENGAL & SIKKIM	WS	FWS	SCT	FWS	WS	WS	WS
6	GANGETIC WEST BENGAL	WS	FWS	FWS	FWS	WS	WS	FWS
7	ODISHA	FWS	SCT	SCT	SCT	FWS	FWS	FWS
8	JHARKHAND	WS	FWS	SCT	SCT	FWS	FWS	FWS
9	BIHAR	SCT	SCT	SCT	SCT	SCT	SCT	FWS
10	EAST UTTAR PRADESH	SCT	SCT	ISOL	ISOL	SCT	SCT	SCT
11	WEST UTTAR PRADESH	FWS	FWS	SCT	SCT	SCT	SCT	SCT
12	UTTARAKHAND	WS	FWS	FWS	FWS	WS	WS	WS
13	HARYANA, CHANDIGARH & DELHI	FWS	FWS	SCT	SCT	SCT	SCT	SCT
14	PUNJAB	FWS	FWS	SCT	SCT	SCT	SCT	SCT
15	HIMACHAL PRADESH	FWS	FWS	SCT	SCT	FWS	FWS	FWS
16	JAMMU AND KASHMIR AND LADAKH	FWS	FWS	FWS	SCT	SCT	SCT	SCT
17	WEST RAJASTHAN	ISOL	ISOL	ISOL	SCT	SCT	FWS	FWS
18	EAST RAJASTHAN	ISOL	SCT	SCT	FWS	FWS	FWS	FWS
19	WEST MADHYA PRADESH	FWS	FWS	WS	WS	WS	FWS	FWS
20	EAST MADHYA PRADESH	WS	WS	WS	WS	WS	WS	FWS
21	GUJRAT REGION	WS	FWS	FWS	FWS	WS	WS	FWS
22	SAURASHTRA & KUTCH	FWS	FWS	FWS	FWS	FWS	FWS	FWS
23	KONKAN & GOA	WS	WS	WS	WS	WS	WS	WS
24	MADHYA MAHARASHTRA	FWS	FWS	SCT	SCT	SCT	SCT	SCT
25	MARATHWADA	SCT	SCT	ISOL	ISOL	ISOL	ISOL	ISOL
26	VIDARBHA	WS	WS	WS	FWS	FWS	FWS	FWS
27	CHHATTISGARH	WS	WS	FWS	FWS	FWS	WS	WS
28	COASTAL ANDHRA PRADESH	ISOL	ISOL	ISOL	ISOL	ISOL	SCT	SCT
29	TELANGANA	SCT	SCT	SCT	SCT	SCT	SCT	SCT
30	RAYALASEEMA	ISOL	ISOL	ISOL	ISOL	ISOL	ISOL	ISOL
31	TAMILNADU & PUDUCHERRY	ISOL	ISOL	ISOL	ISOL	ISOL	ISOL	ISOL
32	COSTAL KARNATAKA	WS	WS	WS	WS	WS	WS	WS
33	NORTH INTERIOR KARNATAKA	FWS	FWS	FWS	FWS	SCT	SCT	SCT
34	SOUTH INTERIOR KARNATAKA	SCT	SCT	SCT	SCT	SCT	SCT	SCT
35	KERALA AND MAHE	WS	WS	WS	WS	WS	WS	WS
36	LAKSHADWEEP	FWS	FWS	FWS	FWS	FWS	FWS	FWS

- As the lead period increases forecast accuracy decrease.





- Action may be taken based on ORANGE AND REDCOLOUR warnings.
- Vulnerable regions likely urban and hilly areas action may be initiated for heavy rainfall warning.
- As the lead period increases forecast accuracy decreases.

Detailed districtwise MultiHazard weather warning for next five days available at
<https://mausam.imd.gov.in/responsive/districtWiseWarningGIS.php>

Weather forecast over Delhi/NCR during 09th to 12th July 2025**Past Weather:**

There has been no large change in the minimum temperature and an appreciable rise in maximum temperature by 2 to 4 °C over Delhi/NCR during the past 24 hours. The maximum and minimum temperatures over Delhi were around 36 to 38 °C and 25 to 27 °C, respectively. The minimum temperatures were below normal by 1 to 3 °C, and the maximum temperatures were below normal by 1 to 2 °C. Partly cloudy sky conditions with predominant surface wind from the southwest direction, with wind speeds up to 15 kmph, prevailed during the past 24 hours. Generally cloudy sky conditions with a windspeed of less than 10 kmph from the southwest direction prevailed over the region in the forenoon today.

Weather Forecast:

09.07.2025: Generally cloudy sky. Light to Moderate rain accompanied by thunderstorms/lightning. The maximum temperatures over Delhi are likely to be in the range of 34 to 36°C. The maximum temperature will be near normal. The predominant surface wind will likely be from the southwest direction with a wind speed of less than 15 kmph in the afternoon. The wind speed will gradually increase, becoming 15-20 kmph from the southwest direction during evening and night.

10.07.2025: Partly cloudy sky. Light to moderate rain accompanied by thunderstorms/lightning. The maximum and minimum temperatures over Delhi are likely to be in the range of 31 to 33°C and 23 to 25°C, respectively. The minimum temperature will be below normal up to 1 to 3°C, and the maximum temperature will be below normal up to 3 to 5°C. The predominant surface wind will likely be from the southeast direction with a wind speed of less than 15 kmph during the morning hours. The wind speed will gradually decrease becoming less than 12 kmph from the northeast direction in the afternoon. It will decrease to less than 10 kmph from the northeast direction during the evening and night.

11.07.2025: Partly cloudy sky. Very light to light rain accompanied by thunderstorms/lightning. The maximum and minimum temperatures over Delhi are likely to be in the range of 33 to 35°C and 23 to 25°C, respectively. The minimum temperature will be below normal up to 1 to 3 °C, and the maximum temperature will be below normal up to 2 to 4°C. The predominant surface wind will likely be from the northwest direction with a wind speed of less than 10 kmph during the morning hours. The wind speed will gradually increase, becoming less than 15 kmph from the northwest direction in the afternoon. It will decrease to less than 12 kmph from the northeast direction during the evening and night.

12.07.2025: Partly cloudy sky. Very light to light rain accompanied by thunderstorms/lightning. The maximum and minimum temperatures over Delhi are likely to be in the range of 34 to 36°C and 24 to 26°C, respectively. The minimum temperature will be below normal by 1 to 2 °C, and the maximum temperature will be near normal. The predominant surface wind will likely be from the northeast direction with a wind speed of less than 10 kmph during the morning hours. The wind speed will gradually increase, becoming less than 15 kmph from the southeast direction in the afternoon. It will decrease to less than 12 kmph from the east/southeast direction during the evening and night.

Impact expected and Action Suggested due to thunderstorm with lightning:

- Be cautious and take precautionary measures, though there is the likelihood of thunderstorm/lightning.
- Damage to standing crops, Minor to major damage to power and communication lines due to breaking of branches, Partial damage to vulnerable structures due to strong winds, Loose objects may fly.
- People are advised to keep a watch on the weather for worsening conditions and be ready to move to safer places accordingly, stay indoors, close windows & doors and avoid travel if possible, take safe shelters; do not take shelter under trees, do not lie on concrete floors and do not lean against concrete walls, unplug electrical/ electronic appliances, immediately get out of water bodies, keep away from all the objects that conduct electricity.

Impact & Action Suggested

- ✓ **Extremely heavy rainfall (≥ 21 cm)** very likely at isolated places over southeast Madhya Pradesh, Vidarbha, south Chhattisgarh on 09th July.
- ✓ **Very heavy rainfall** over Madhya Pradesh during 09th-12th; Vidarbha & Chhattisgarh on 10th July. Uttarakhand, Uttar Pradesh, Punjab, Haryana, Tripura, West Bengal, Jharkhand on 09th, East Rajasthan during 11th-13th July.

Impact Expected

- Localized Flooding of roads, water logging in low lying areas and closure of underpasses mainly in urban areas of the above region.
- Occasional reduction in visibility due to heavy rainfall.
- Disruption of traffic in major cities due to water logging in roads leading to increased travel time.
- Minor damage to kutcha roads.
- Possibilities of damage to vulnerable structure.
- Localized Landslides/Mudslides/landslips/mudslips/landsinks/mudsinks.
- Damage to horticulture and standing crops in some areas due to inundation.
- It may lead to riverine flooding in some river catchments (for riverine flooding please visit Web page of CWC)

Action Suggested

- Check for traffic congestion on your route before leaving for your destination.
- Follow any traffic advisories that are issued in this regard.
- Avoid going to areas that face the water logging problems often.
- Avoid staying in vulnerable structure.

Agromet advisories for likely impact of Heavy / Heavy to Very Heavy / Extremely Heavy Rainfall

- In **Madhya Pradesh**, In **Gird Zone**, postpone sowing of soybean, pearl millet and drain out excess water from already sown fields. In **Satpura Plateau zone**, make arrangements for proper drainage in the fields of maize, soybean and vegetables. Protect vegetable nursery with green net or any other medium. In **Kymore Plateau** and **Satpura Hill Zone**, drain out excess water from vegetables.
- In **Chhattisgarh**, ensure proper drainage in rice nurseries, fields of rice, maize, pigeon pea, minor millets and vegetables. Postpone line sowing / transplanting of rice and sowing of pigeon pea, maize and soybean in **Plain Zone**.
- In **Konkan**, make arrangement to drain out excess water from rice and finger millet nurseries, groundnut, vegetables and orchards. In **ghat areas of Madhya Maharashtra** drain out excess water from rice and finger millet nurseries. In **Vidarbha**, make arrangements to drain out excess water from already sown kharif crops, vegetable nurseries and orchards. Provide mechanical support to newly planted orchards and staking in vegetables, keep the farm animals indoor during thunderstorm and lightning periods.
- In **Gujarat region**, drain out excess water from rice nurseries, sugarcane fields, banana and mango plantations to prevent waterlogging. Provide support to sugarcane with strong bamboo or tie the leaves together to prevent lodging.
- In **Uttarakhand**, ensure proper drainage facilities in soybean, maize, barnyard millet, finger millet, pigeon pea, kidney beans, vegetables and orchards. Harvest matured vegetables and fruits and store in safe place.
- In **Odisha**, ensure proper drainage from already sown rice nurseries, fields of maize and vegetables to prevent waterlogging. Harvest matured vegetables and fruits and keep in safer places. In **West Central Table Land Zone**, postpone sowing of pigeon pea and groundnut. In case of poor germination / no germination in maize crop due to waterlogged condition, carry out re-sowing during favourable weather.
- In **West Bengal**, drain out stagnant water from the fields of *kharif* rice, green gram, brinjal and jute. In **Gangetic West Bengal**, maintain proper water level in seed bed of *Aman* rice; arrange proper drainage in betelvine and vegetables in **Coastal Saline Zone**. In **Hill Zone**, withhold sowing of soybean if sowing is not yet done. Maintain proper drainage channels in the fields of finger millet, already sown soybean and ginger fields. To avert the impact of rainfall on seeds, apply mulches.
- In **Jharkhand**, make necessary arrangements to drain out excess water from maize fields, rice and vegetable nurseries. Cover the vegetable nurseries with polythene sheets.
- In **Tripura** - Maintain good drainage in the fields of *Aus* rice and maize. Continue transplanting of *Aus* rice seedlings.

Livestock / Fishery

- Keep the animals inside the shed during heavy rainfall and provide them balanced feed.
- Store feed and fodder in a safe place to prevent spoilage.
- Construct an outlet with proper netting around the ponds to drain out excess water, thereby preventing fish from escaping in case of overflow.

Agromet advisories for likely impact of Thunderstorm / Gusty Winds / Squally Winds

- Provide mechanical support to horticultural crops and staking or support to vegetables and young fruit plants / fruit-bearing plants to avoid lodging due to strong winds.

Flash flood guidance:

<p>24 hours Outlook for the Flash Flood Risk (FFR) till 1130 IST of 10-07-2025 :</p> <p>Moderate to High flash flood risk likely over few watersheds & neighbourhoods of following Met Sub-divisions during next 24 hours.</p> <p>Chhattisgarh - Balarampur, Balod, Bemetara, Bilaspur, Dhamtari, Durg, Janjgir_Champa, Jashpur, Korba, Korea, Mahasamund, Mungeli, Raipur, Rajnandgaon, Surajpur, Kawardha and Surguja districts.</p> <p>East Madhya Pradesh - Anuppur, Balaghat, Chhatarpur, Chhindwara, Damoh, Dindori, Jabalpur, Katni, Mandla, Narshimpura, Niwari, Panna, Sagar, Seoni, Shahdol, Singrauli, Tikamgarh and Umaria districts.</p> <p>Vidarbha - Bhandara, Gondiya and Nagpur districts.</p> <p>Low to Moderate flash flood risk likely over few watersheds & neighbourhoods of following Met Sub-divisions during next 24 hours</p> <p>West Madhya Pradesh - Ashoknagar, Guna, Gwalior, Raisen, Sheopur and Shivpuri districts.</p> <p>Surface runoff/ Inundation may occur at some fully saturated soils & low-lying areas over Area of Concern (AoC) as shown in map due to expected rainfall occurrence in next 24 hours.</p>	<p>Product: GFS FFR Timescale: 24-hr Region: "REGIONAL"</p> <p>Product Date: 2025-07-09 06:00 UTC Valid Date: 2025-07-10 06:00 UTC</p>
--	--

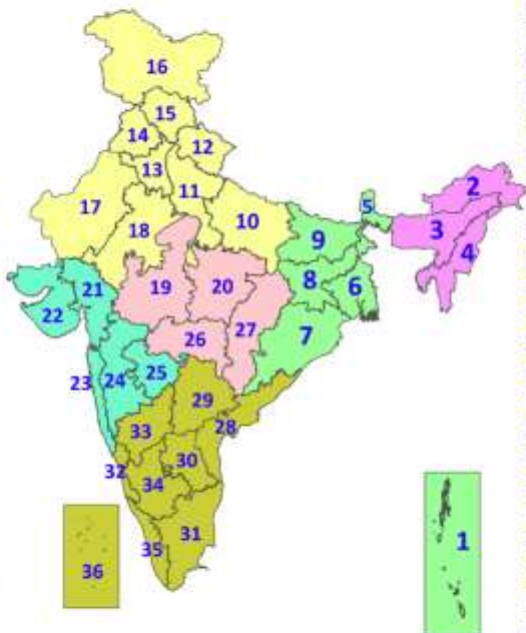
Legends & abbreviations:

- ❖ **Heavy Rain:** 64.5-115.5mm; **Very Heavy Rain:** 115.6-204.4mm; **Extremely Heavy Rain:** >204.4mm.
- ❖ **Obsy:** Observatory; **Automatic Weather Station;** **ARG:** Automatic Rain Gauge; **dist:** District; **NH:** National Highway; **KVK:** Krishi Vigyan Kendra; **DVC:** Damodar Valley Corporation; **PTO:** Part Time Office, **Aero:** Aerodrome, **IAF:** Indian Air Force.
- ❖ **Region wise classification of meteorological Sub-Divisions:**

- **Northwest India:** Western Himalayan Region (Jammu-Kashmir-Ladakh-Gilgit-Baltistan-Muzaffarabad, Himachal Pradesh and Uttarakhand); Punjab, Haryana-Chandigarh-Delhi; West Uttar Pradesh, East Uttar Pradesh, West Rajasthan and East Rajasthan.
- **Central India:** West Madhya Pradesh, East Madhya Pradesh, Vidarbha and Chhattisgarh.
- **East India:** Bihar, Jharkhand, Sub-Himalayan West Bengal & Sikkim; Gangetic West Bengal, Odisha and Andaman & Nicobar Islands.
- **Northeast India:** Arunachal Pradesh, Assam & Meghalaya and Nagaland, Manipur, Mizoram & Tripura.
- **West India:** Gujarat Region, Saurashtra & Kutch, Konkan & Goa, Madhya Maharashtra and Marathawada.
- **South India:** Coastal Andhra Pradesh & Yanam, Telangana, Rayalaseema, Coastal Karnataka, North Interior Karnataka, South Interior Karnataka, Kerala & Mahe, Tamil Nadu, Puducherry & Karaikal and Lakshadweep.

LEGENDS

1. अंडमान और निकोबार द्वीपसमूह
2. अरुणाचल प्रदेश
3. असम और मेघालय
4. नागालैंड, मणिपुर, मिजोरम और त्रिपुरा
5. उप-हिमालयी पश्चिम बंगाल और सिक्किम
6. गंगीय पश्चिम बंगाल
7. ओडिशा
8. झारखंड
9. बिहार
10. पूर्वी उत्तर प्रदेश
11. पश्चिम उत्तर प्रदेश
12. उत्तराखंड
13. हरियाणा, चंडीगढ़ और दिल्ली
14. पंजाब
15. हिमाचल प्रदेश
16. जम्मू और कश्मीर और लद्दाख
17. पश्चिम राजस्थान
18. पूर्वी राजस्थान
19. पश्चिम मध्य प्रदेश
20. पूर्वी मध्य प्रदेश
21. गुजरात
22. सौराष्ट्र
23. कोंकण और गोवा
24. मध्य महाराष्ट्र
25. मराठवाड़ा
26. विदर्भ
27. छत्तीसगढ़
28. तटीय आंध्र प्रदेश और यनम
29. तेलंगाना
30. रायलसीमा
31. तमिलनाडु, पुडुचेरी और कराईकल
32. तटीय कर्नाटक
33. आंतरिक उत्तरी कर्नाटक
34. आंतरिक दक्षिणी कर्नाटक
35. केरल और माहे
36. लक्षद्वीप



1. Andaman & Nicobar Islands
2. Arunachal Pradesh
3. Assam & Meghalaya
4. Nagaland, Manipur, Mizoram & Tripura
5. Sub-Himalayan West Bengal & Sikkim
6. Gangetic West Bengal
7. Odisha
8. Jharkhand
9. Bihar
10. East Uttar Pradesh
11. West Uttar Pradesh
12. Uttarakhand
13. Haryana, Chandigarh & Delhi
14. Punjab
15. Himachal Pradesh
16. Jammu & Kashmir and Ladakh
17. West Rajasthan
18. East Rajasthan
19. West Madhya Pradesh
20. East Madhya Pradesh
21. Gujarat
22. Saurashtra
23. Konkan & Goa
24. Madhya Maharashtra
25. Marathwada
26. Vidarbha
27. Chhattisgarh
28. Coastal Andhra Pradesh & Yanam
29. Telangana
30. Rayalaseema
31. Tamilnadu, Puducherry & Karaikal
32. Coastal Karnataka
33. North Interior Karnataka
34. South Interior Karnataka
35. Kerala & Mahe
36. Lakshadweep

SPATIAL DISTRIBUTION (% of Stations reporting)

% Stations	Category	% Stations	Category
76-100	Widespread (WS/Most Places)	26-50	Scattered (SCT/A Few Places)
51-75	Fairly Widespread (FWS/Many Places)	1-25	Isolated (ISOL)



Fog



Heavy Rain



Very Heavy Rain



Extremely Heavy Rain



Thunder & Lightning



Hailstorm



Dust Raising Winds



Heavy Snow



Dust Storm



Heat Wave



Warm Night



Hot Day



Hot & Humid



Strong Surface Winds



Cold Wave



Cold Day



Ground Frost

COLOUR CODED WARNING

No Warning (No Action)
Watch (Be Aware)
Alert (Be Prepared To Take Action)
Warning (Take Action)

Probabilistic Forecast

Terms	Probability of Occurrence (%)
Unlikely	< 25
Likely	25 - 50
Very Likely	50 - 75
Most Likely	> 75

* Red colour warning does not mean "Red Alert", Red colour warning means "Take Action".

Forecast and Warning for any day is valid from 0830 hours IST of day till 0830 hours IST of next day.

For more details, kindly visit <https://mausam.imd.gov.in> or contact: 011-2434-4599

(Service to the Nation since 1875)

DEFINITION/CRITERIA

Rain/ Snow *

Heavy: 64.5 to 115.5 mm/cm *
Very Heavy: 115.6 to 204.4 mm/cm *
Extremely Heavy: > 204.4 mm/cm *

Heat Wave

When maximum temperature of a station reaches $\geq 40^{\circ}\text{C}$ for plains and $\geq 30^{\circ}\text{C}$ for hilly regions
(a) Based on Departure from normal

Heat Wave: Maximum Temperature Departure from normal 4.5°C to 6.4°C .

Severe Heat Wave: Maximum Temperature Departure from normal $\geq 6.5^{\circ}\text{C}$

(b). Based on Actual maximum temperature

Heat Wave: When actual maximum temperature $\geq 45^{\circ}\text{C}$.

Severe Heat Wave: When actual maximum temperature $\geq 47^{\circ}\text{C}$.

(c). Criteria for heat wave for coastal stations

When maximum temperature departure is $> 4.5^{\circ}\text{C}$ from normal. Heat Wave may be described provided maximum temperature $\geq 37^{\circ}\text{C}$.

Warm Night

When maximum temperature remains 40°C

Warm Night: When minimum temperature departure 4.5°C to 6.4°C .

Severe Warm Night: When minimum temperature departure $> 6.4^{\circ}\text{C}$.

Cold Wave

When minimum temperature of a station $\leq 10^{\circ}\text{C}$ for plains and $\leq 0^{\circ}\text{C}$ for hilly regions.
(a). Based on departure

Cold Wave: Minimum Temperature Departure from normal -4.5°C to -6.4°C .

Severe Cold Wave: Minimum Temperature Departure from normal $\leq -6.5^{\circ}\text{C}$

(b) Based on actual Minimum Temperature (for Plains only)

Cold Wave: When Minimum Temperature is $\leq 4.0^{\circ}\text{C}$

Severe Cold Wave: When Minimum Temperature is $\leq 2.0^{\circ}\text{C}$

(c) For Coastal Stations

When Minimum Temperature departure is $\leq -4.5^{\circ}\text{C}$ & actual Minimum Temperature is $\leq 15^{\circ}\text{C}$

Cold Day

When minimum temperature of a station $\leq 10^{\circ}\text{C}$ for plains and $\leq 0^{\circ}\text{C}$ for hilly regions
Based on departure

Cold Day: Maximum Temperature Departure from normal -4.5°C to -6.4°C .

Severe Cold Day: Maximum Temperature Departure from normal $\leq -6.5^{\circ}\text{C}$

Fog

Phenomenon of small droplets suspended in air and the horizontal visibility $< 1\text{km}$

Moderate Fog: When the visibility between 500-200 metres

Dense Fog: when the visibility between 50- 200 metres

Very Dense Fog: when the visibility < 50 metres

Thunderstorm

Sudden electrical discharges manifested by a flash of light (Lightning) and a sharp rumbling sound (thunder)

Dust/Sand Storm

An ensemble of particles of dust or sand energetically lifted to great heights by a strong and turbulent wind.

Frost

Ice deposits on ground

Air temperature $\leq 4^{\circ}\text{C}$ (over Plains)

Squall

A strong wind that rises suddenly, lasts for atleast 1 minute.

Moderate: Wind speed 52-61 kmph

Severe: Wind speed 62-67 kmph

Very Severe: Wind speed > 67 kmph

Sea State

Effect of various waves in the sea over specific area

Rough to very rough: Wind speed 41-62 kmph (22-33 knots) & Wave height 2.5-6 metre

High to very high: Wind speed 63-117 kmph (34-63 knots) & Wave height 6-14 metre

Phenomenal: Wind speed > 117 kmph (> 63 knots) & Wave height > 14 metre

Cyclone

Cyclonic Storm: Wind speed 62-87 kmph (34-47 knots)

Severe Cyclonic Storm: Wind speed 88-117 kmph (48-63 knots)

Very Severe Cyclonic Storm: Wind speed 118-165 kmph (64 - 89 knots)

Extremely Severe Cyclonic Storm: Wind speed 166-220 kmph (90 -119 knots)

Super Cyclone Storm: Wind speed > 220 kmph (> 119 knots)

* Red colour warning does not mean "Red Alert", Red colour warning means "Take Action".

Forecast and Warning for any day is valid from 0830 hours IST of day till 0830 hours IST of next day.

For more details, kindly visit <https://mausam.imd.gov.in> or contact: 011-2434-4599

(Service to the Nation since 1875)

Hot and Humid: When maximum temperatures remain 3°C above normal along with the above normal relative humidity.